

Machine learning for precision medicine

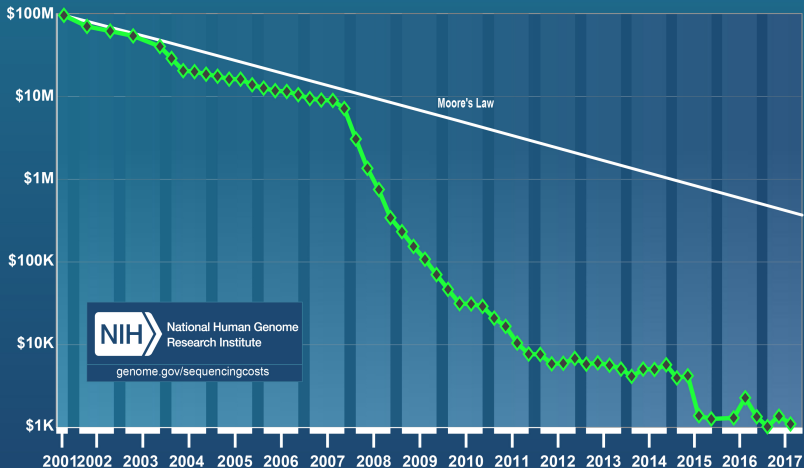
Jean-Philippe Vert

`jean-philippe.vert@m4x.org`



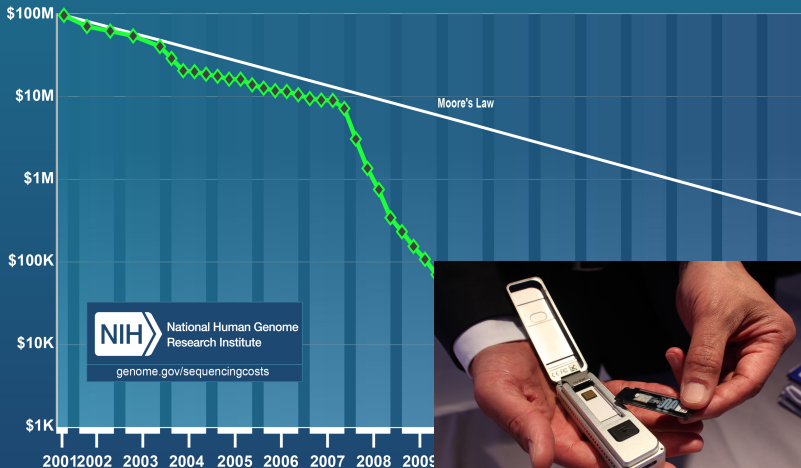
The sequencing revolution

Cost per Genome

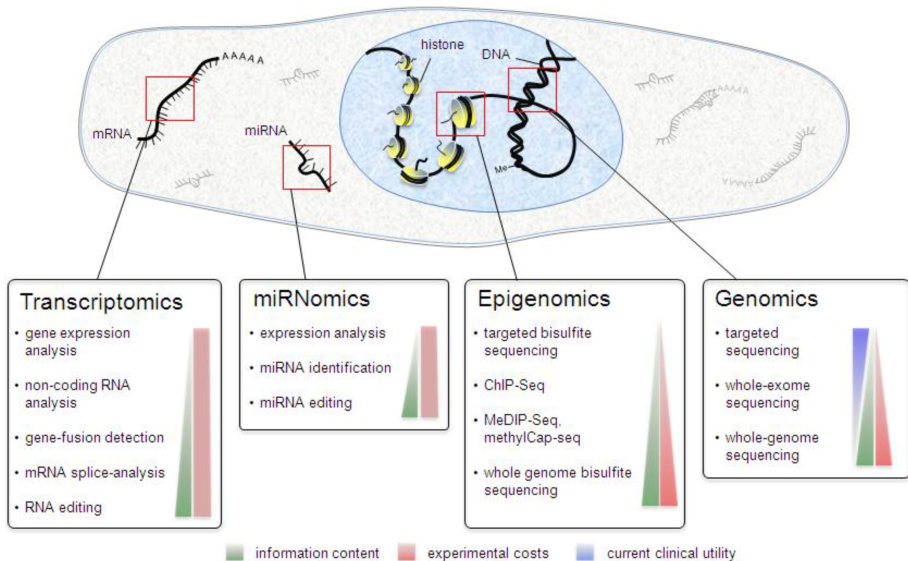


The sequencing revolution

Cost per Genome

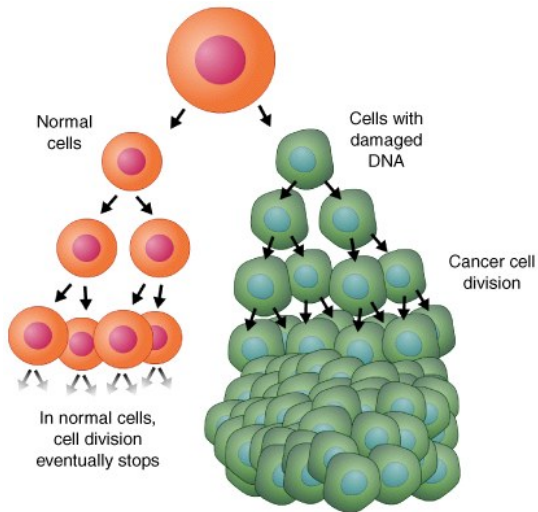


Sequencing is a swiss army knife for "omics"

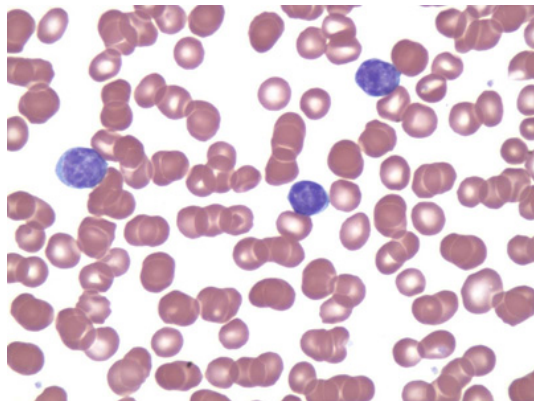


(Frese et al., 2013)

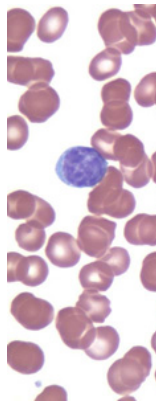
Cancer



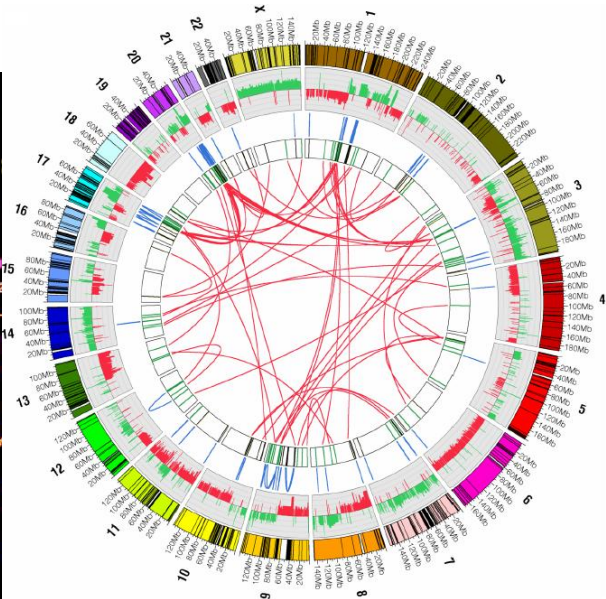
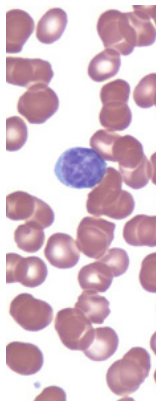
A cancer cell (1900)



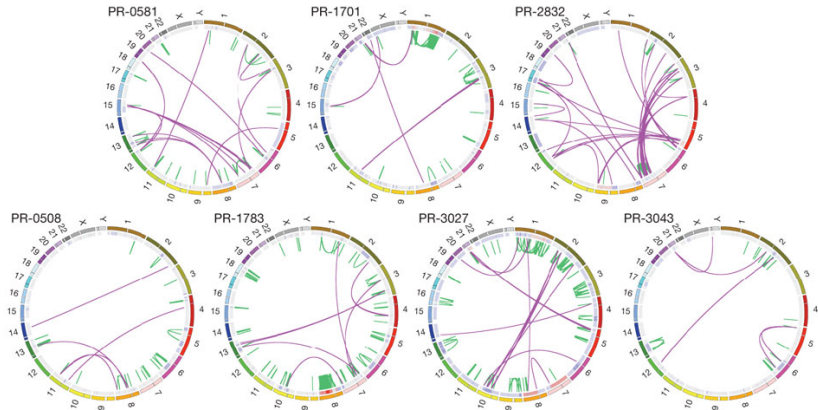
A cancer cell (1960)



A cancer cell (2010)



All cancers are different

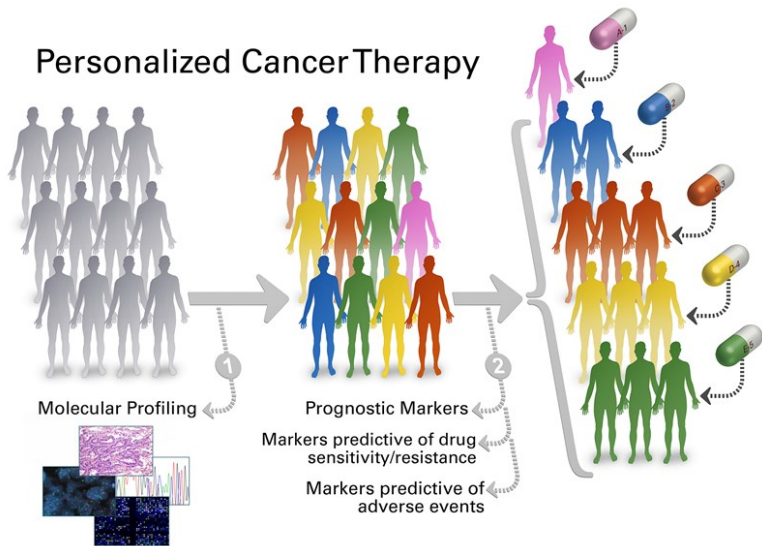


All happy families are alike; each unhappy family is unhappy in its own way.

- Leon Tolstoy, Anna Karenina.

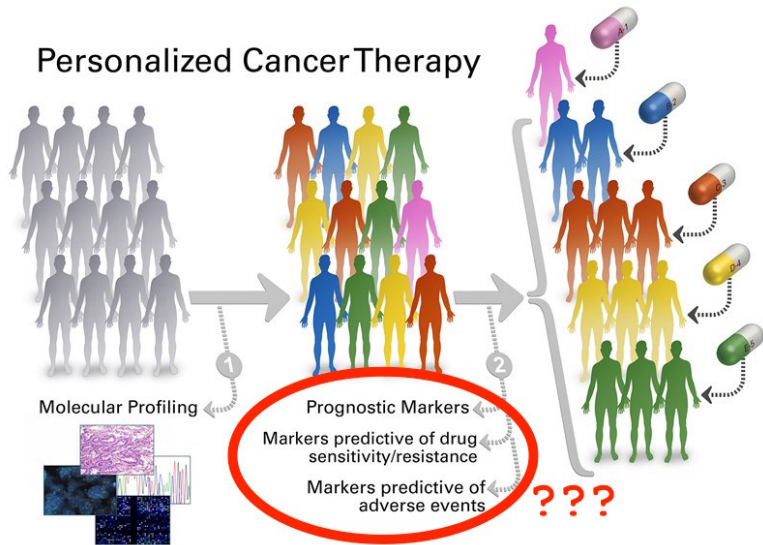
The future of medicine

Personalized Cancer Therapy

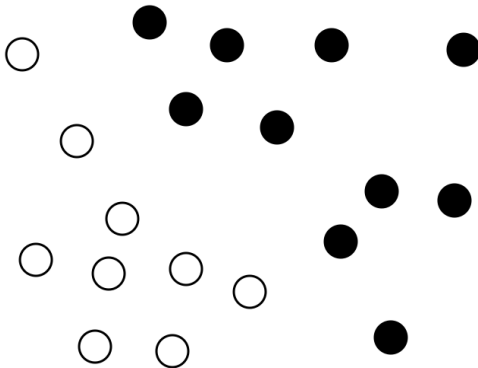


The future of medicine

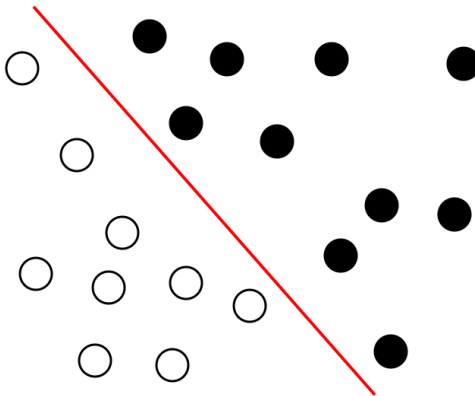
Personalized Cancer Therapy



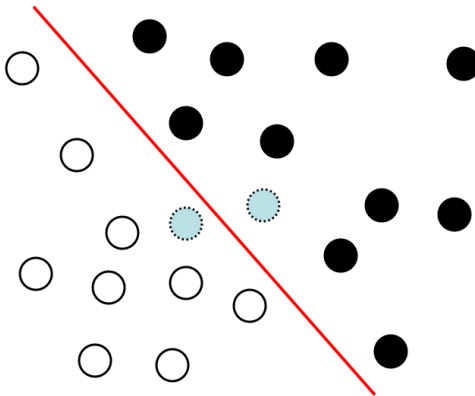
Machine learning



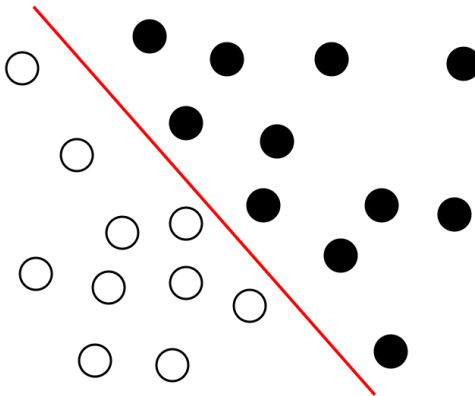
Machine learning



Machine learning



Machine learning



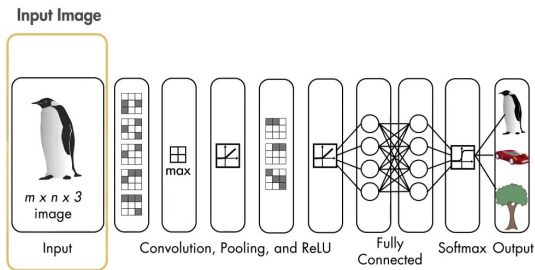
Modern ML works well!



*Turing Award Won by 3
Pioneers in Artificial Intelligence*

Ingredients

- 1 Collect **big, labeled** data (eg, 10M images)
- 2 Use a model **well adapted** to the data (eg, CNN)

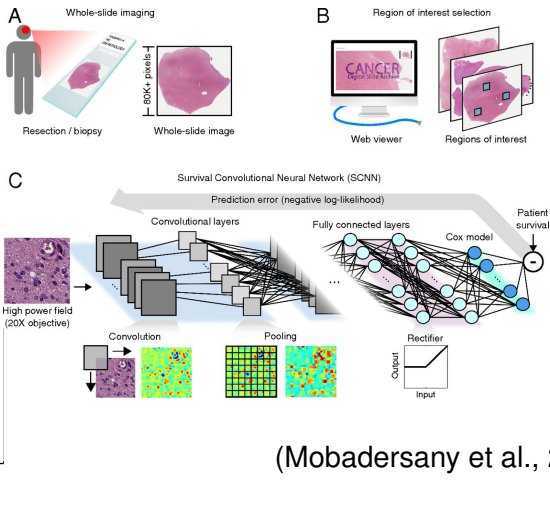


(from <https://www.youtube.com/watch?v=gjK70r0Rqzs>)

- 3 Large **computational** power + **know-how** ("alchemy"?)

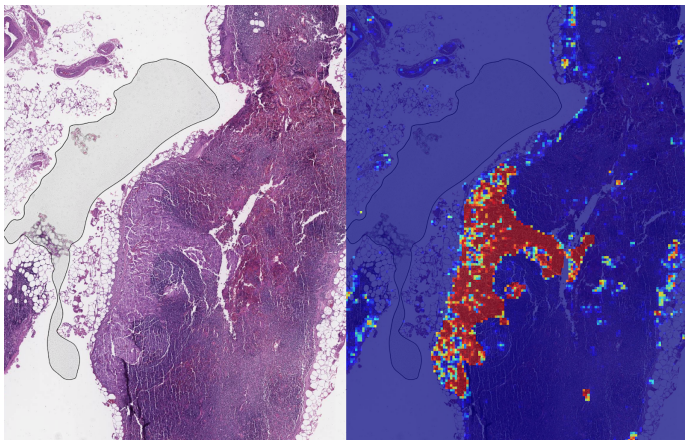
Many **applications**: object/face recognition in images, machine translation, speech recognition, go, self-driving cars, trading, recommender systems, chemistry, material science...

Promising applications in health: images, texts, ..?



Also: high-content screening, digital pathology, radiomics, skin diagnosis, EHR, ...

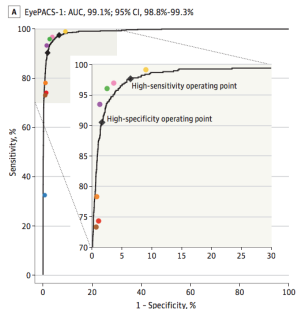
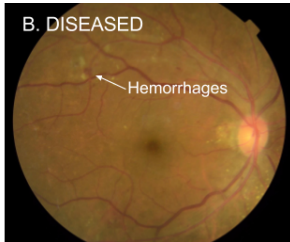
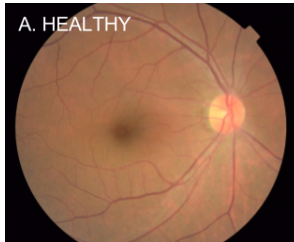
Ex: breast cancer metastasis detection (LYNA)



<https://ai.googleblog.com/2018/10/applying-deep-learning-to-metastatic.html>

- Trained on 270 (large) images, 99% accuracy
- halves average slide review time for expert pathologists

Ex: Diabetic retinopathy (DR) detection

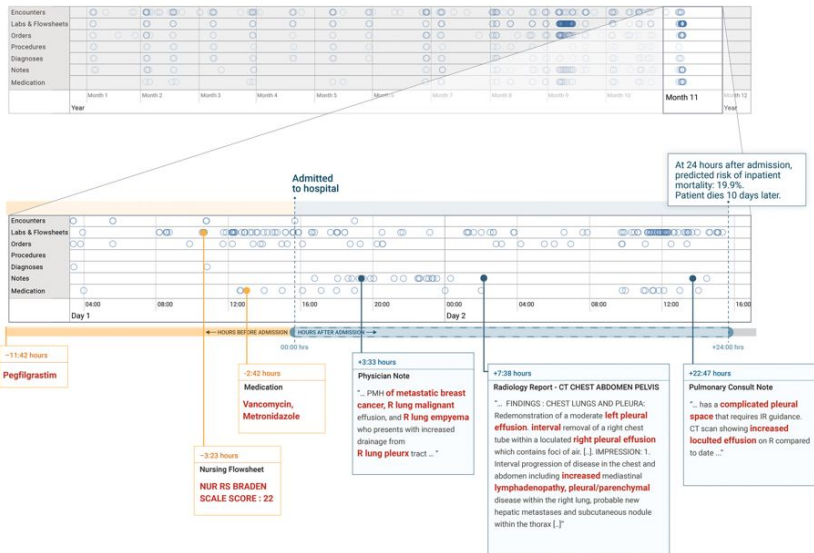


<https://ai.googleblog.com/2016/11/deep-learning-for-detection-of-diabetic.html>

- Fastest growing cause of blindness, with nearly 415 million diabetic patients at risk worldwide
- Lack of medical expertise for good diagnosis in many parts of the world
- System trained on 128k annotated images.

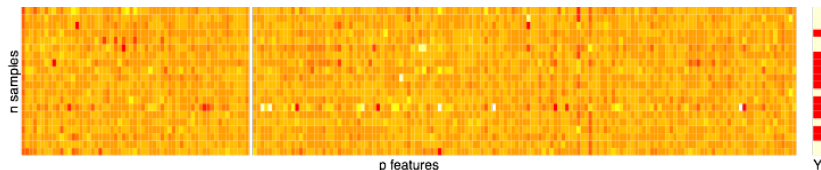
Ex: Clinical predictions from electronic health records

Patient Timeline

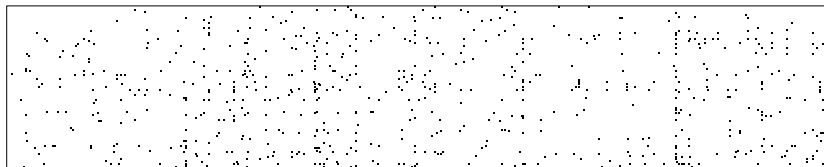


More challenging data

- Gene expression



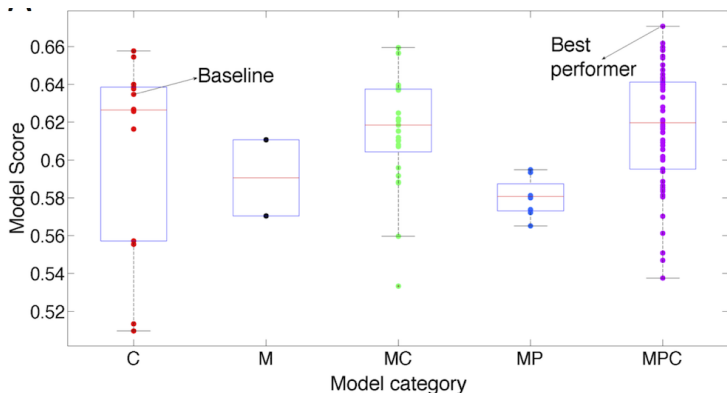
- Somatic mutations



- $n = 10^2 \sim 10^4$ (patients)
- $p = 10^4 \sim 10^7$ (genes, mutations, copy number, ...)
- Data of **various nature** (continuous, discrete, structured, ...)
- Data of **variable quality** (technical/batch variations, noise, ...)

Consequence: limited accuracy

Breast cancer prognosis competition, $n = 2000$, Bilal et al (2013)



- C: 16 standard clinical data (age, tumor size, ...)
- M: 80k molecular features (gene expression, DNA copy number)
- P: incorporate prior knowledge

Consequence: unstable biomarker selection

Gene expression profiling predicts clinical outcome of breast cancer

Laura J. van 't Veer*†, Hongyue Dai†‡, Marc J. van de Vijver*†, Yudong D. He‡, Augustinus A. M. Hart*, Mao Mao‡, Hans L. Peterse*, Karin van der Kooy*, Matthew J. Marton‡, Anke T. Witteveen*, George J. Schreiber‡, Ron M. Kerkhoven*, Chris Roberts‡, Peter S. Linsley‡, René Bernards* & Stephen H. Friend‡

* Divisions of Diagnostic Oncology, Radiotherapy and Molecular Carcinogenesis and Center for Biomedical Genetics, The Netherlands Cancer Institute, 121 Plesmanlaan, 1066 CX Amsterdam, The Netherlands
‡ Rosetta Inpharmatics, 12040 115th Avenue NE, Kirkland, Washington 98034

70 genes (Nature, 2002)

Gene-expression profiles to predict distant metastasis of lymph-node-negative primary breast cancer

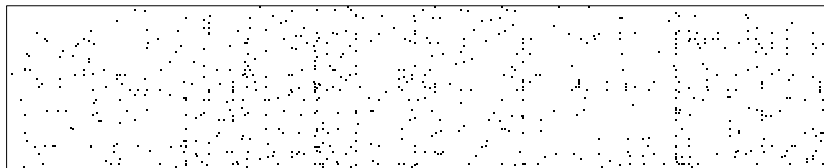
Yixin Wang, Jan G M Kljin, Yi Zhang, Anieta M Sieuwerts, Maxime P Look, Fei Yang, Dmitri Talantov, Mieke Timmermans, Marion E Meijer-van Gelder, Jack Yu, Tim Jatkoe, Els M J J Berns, David Atkins, John A Foekens

76 genes (Lancet, 2005)

3 genes in common

van 't Veer et al. (2002); Wang et al. (2005)

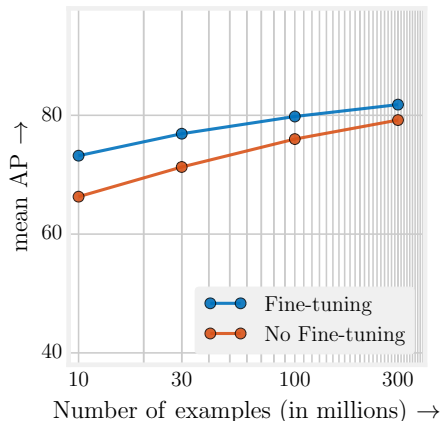
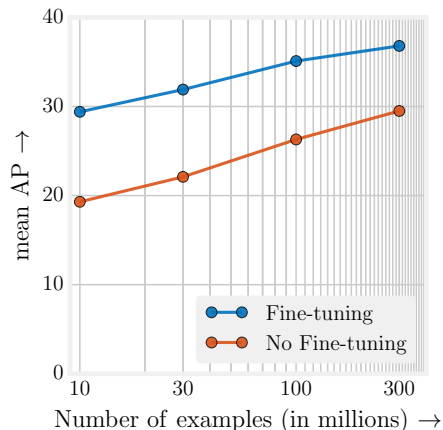
What to do?



- Get **more data**
 - with labels
 - sharing data (or models) is crucial
 - of good quality
- Improve the **models**
 - include prior knowledge (biology, structure of noise, invariants...)
 - balance model complexity vs data available

More data helps

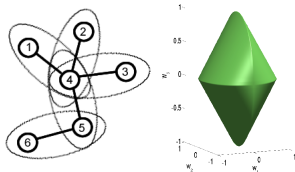
...but performance increases slowly. How much can be afford?



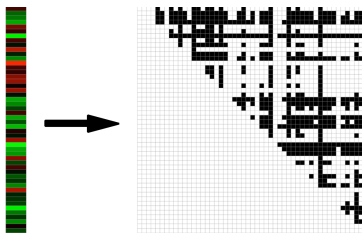
Object detection performance on two benchmarks (COCO minimal, left, and PASCAL VOC 2007, right) as a function of the number of labeled images used to train the model (Sun et al., 2017).

Some research directions

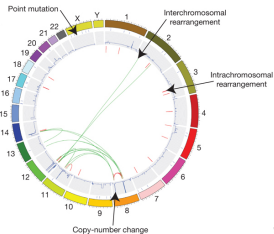
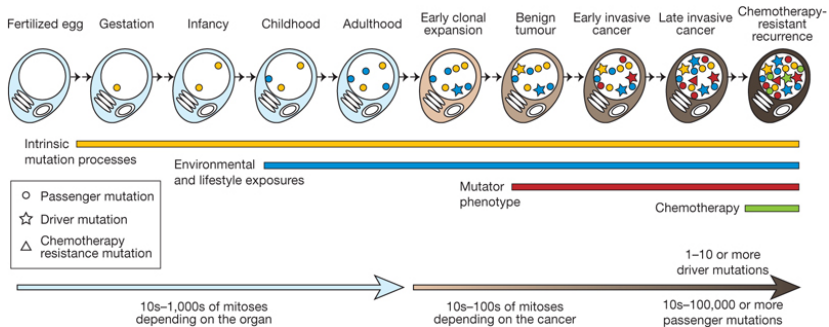
- Regularize and incorporate prior knowledge



- Find a better representation



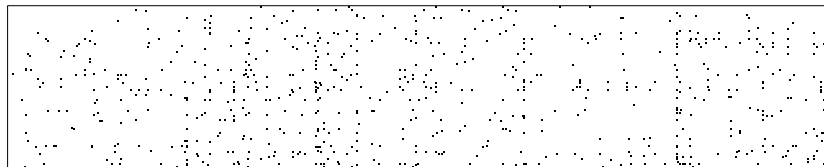
Ex: somatic mutations in cancer



Stratton et al. (2009)

Large-scale efforts to collect somatic mutations

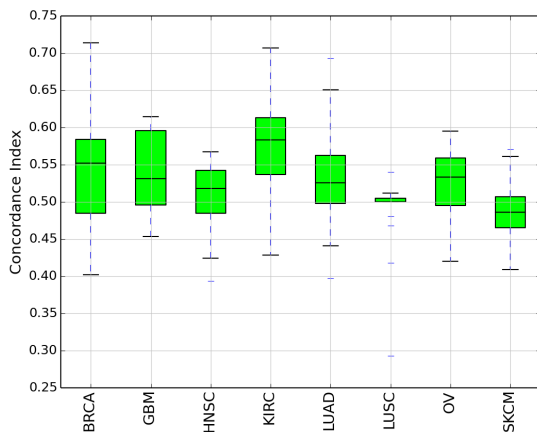
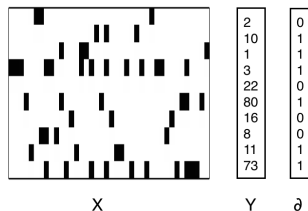
- 3,378 samples with survival information from 8 cancer types
- downloaded from the TCGA / cBioPortal portals.



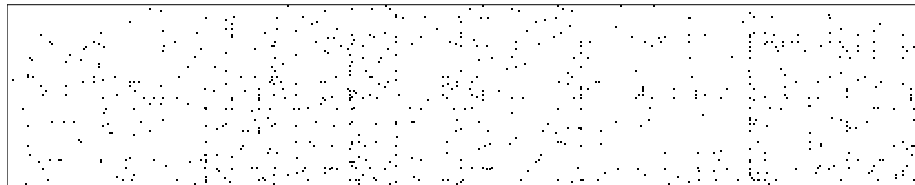
Cancer type	Patients	Genes
LUAD (Lung adenocarcinoma)	430	20 596
SKCM (Skin cutaneous melanoma)	307	17 463
GBM (Glioblastoma multiforme)	265	14 750
BRCA (Breast invasive carcinoma)	945	16 806
KIRC (Kidney renal clear cell carcinoma)	411	10 609
HNSC (Head and Neck squamous cell carcinoma)	388	17 022
LUSC (Lung squamous cell carcinoma)	169	13 590
OV (Ovarian serous cystadenocarcinoma)	363	10 195

Survival prediction from raw mutation profiles

- Each patient is a **binary vector**: each gene is mutated (1) or not (2)
- Silent mutations are removed
- Survival model estimated with sparse survival SVM
- Results on 5-fold cross-validation repeated 4 times



Approach: change representation?



Can we replace

$$x \in \{0, 1\}^p \quad \text{with } p \text{ very large, very sparse}$$

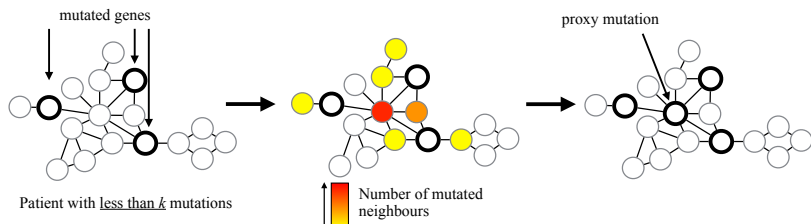
by a representation with more information shared between samples

$$\Phi(x) \in \mathcal{H}$$

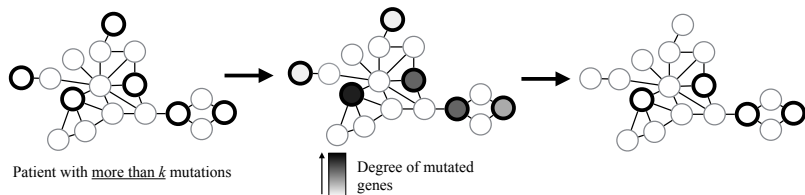
that would allow better supervised and unsupervised classification?

NetNorm (Le Morvan et al., 2017)

- 1 **Add** mutations for patients with **few** (less than K) mutations

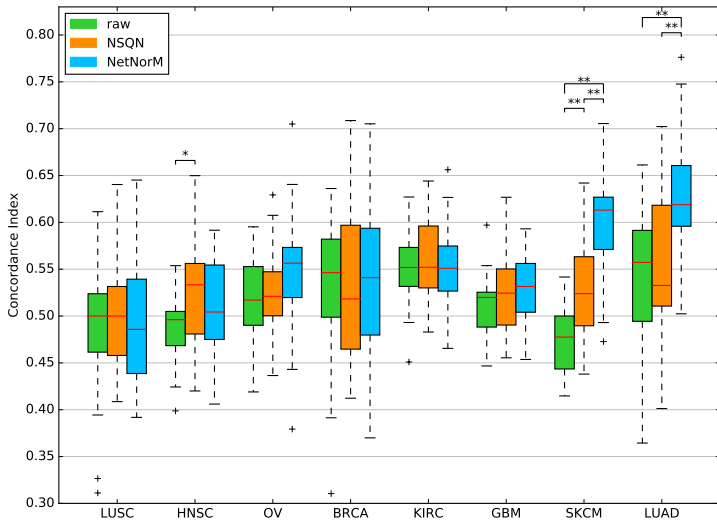


- 2 **Remove** mutations for patients for **many** (more than K) mutations



In practice, K is a free parameter optimized on the training set, typically a few 100's.

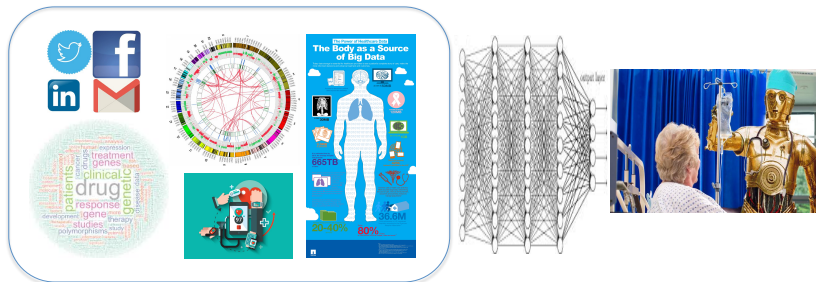
Results



Use Pathway Commons as gene network.

NSQN = Network Smoothing / Quantile Normalization (Hofree et al., 2013)

Conclusion



- Lots of data, increasing role of ML (particularly with images, texts)
- Omics data is more challenging
- Getting more data is important, but unlikely to allow ML-based methods to reach their best
- Active research
 - allowing **data sharing** (federated learning, differential privacy, ...)
 - new **representations** and **learning algorithms** for complex data
 - new **experimental design** strategies, **causality** inference

References

- K. S. Frese, H. A. Katus, and B. Meder. Next-generation sequencing: from understanding biology to personalized medicine. *Biology*, 2:378–398, 2013. ISSN 2079-7737. doi: 10.3390/biology2010378. URL <http://dx.doi.org/10.3390/biology2010378>.
- H. Hoefling. A path algorithm for the Fused Lasso Signal Approximator. *J. Comput. Graph. Stat.*, 19(4):984–1006, 2010. doi: 10.1198/jcgs.2010.09208. URL <http://dx.doi.org/10.1198/jcgs.2010.09208>.
- M. Hofree, J. P. Shen, H. Carter, A. Gross, and T. Ideker. Network-based stratification of tumor mutations. *Nat Methods*, 10(11):1108–1115, Nov 2013. doi: 10.1038/nmeth.2651. URL <http://dx.doi.org/10.1038/nmeth.2651>.
- L. Jacob, G. Obozinski, and J.-P. Vert. Group lasso with overlap and graph lasso. In *ICML '09: Proceedings of the 26th Annual International Conference on Machine Learning*, pages 433–440, New York, NY, USA, 2009. ACM. ISBN 978-1-60558-516-1. doi: 10.1145/1553374.1553431. URL <http://dx.doi.org/10.1145/1553374.1553431>.
- Y. Jiao and J.-P. Vert. The Kendall and Mallows kernels for permutations. In *Proceedings of The 32nd International Conference on Machine Learning*, volume 37 of *JMLR:W&CP*, pages 1935–1944, 2015. URL <http://jmlr.org/proceedings/papers/v37/jiao15.html>.
- Y. Jiao and J.-P. Vert. The Kendall and Mallows kernels for permutations. *IEEE Transactions on Pattern Analysis and Machine Intelligence*, 2017. doi: 10.1109/TPAMI.2017.2719680. URL <http://dx.doi.org/10.1109/TPAMI.2017.2719680>.
- Y. Jiao and J.-P. Vert. The weighted kendall and high-order kernels for permutations. Technical Report 1802.08526, arXiv, 2018.

References (cont.)

- M. Le Morvan and J.-P. Vert. Supervised quantile normalisation. Technical Report 1706.00244, arXiv, 2017.
- M. Le Morvan, A. Zinovyev, and J.-P. Vert. NetNorM: capturing cancer-relevant information in somatic exome mutation data with gene networks for cancer stratification and prognosis. *PLoS Comp. Bio.*, 13(6):e1005573, 2017. URL <http://hal.archives-ouvertes.fr/hal-01341856>.
- C. Li and H. Li. Network-constrained regularization and variable selection for analysis of genomic data. *Bioinformatics*, 24:1175–1182, May 2008. ISSN 1367-4811. doi: 10.1093/bioinformatics/btn081.
- P. Mobadersany, S. Yousefi, M. Amgad, D. A. Gutman, J. S. Barnholtz-Sloan, J. E. Velázquez Vega, D. J. Brat, and L. A. D. Cooper. Predicting cancer outcomes from histology and genomics using convolutional networks. *Proc. Natl. Acad. Sci. U.S.A.*, 115: E2970–E2979, Mar. 2018. ISSN 1091-6490. doi: 10.1073/pnas.1717139115.
- F. Rapaport, A. Zinovyev, M. Dutreix, E. Barillot, and J.-P. Vert. Classification of microarray data using gene networks. *BMC Bioinformatics*, 8:35, 2007. doi: 10.1186/1471-2105-8-35. URL <http://dx.doi.org/10.1186/1471-2105-8-35>.
- M. R. Stratton, P. J. Campbell, and P. A. Futreal. The cancer genome. *Nature*, 458(7239): 719–724, Apr 2009. doi: 10.1038/nature07943. URL <http://dx.doi.org/10.1038/nature07943>.
- C. Sun, A. Shrivastava, S. Singh, and A. Gupta. Revisiting unreasonable effectiveness of data in deep learning era. In *2017 IEEE International Conference on Computer Vision (ICCV)*, pages 843–852, 2017. doi: 10.1109/ICCV.2017.97.

References (cont.)

- L. J. van 't Veer, H. Dai, M. J. van de Vijver, Y. D. He, A. A. M. Hart, M. Mao, H. L. Peterse, K. van der Kooy, M. J. Marton, A. T. Witteveen, G. J. Schreiber, R. M. Kerkhoven, C. Roberts, P. S. Linsley, R. Bernards, and S. H. Friend. Gene expression profiling predicts clinical outcome of breast cancers. *Nature*, 415(6871):530–536, Jan 2002. doi: 10.1038/415530a. URL <http://dx.doi.org/10.1038/415530a>.
- Y. Wang, J. Klijn, Y. Zhang, A. Sieuwerts, M. Look, F. Yang, D. Talantov, M. Timmermans, M. Meijer-van Gelder, J. Yu, T. Jatkoe, E. Berns, D. Atkins, and J. Foekens. Gene-expression profiles to predict distant metastasis of lymph-node-negative primary breast cancers. *Lancet*, 365(9460):671–679, 2005. doi: 10.1016/S0140-6736(05)17947-1. URL [http://dx.doi.org/10.1016/S0140-6736\(05\)17947-1](http://dx.doi.org/10.1016/S0140-6736(05)17947-1).